

CASE STUDY CHOCOLATE MANUFACTURER



MAR CRAFT
CUSTOM HVAC SYSTEMS

MAR CRAFT CUSTOM HVAC SYSTEMS SUPPLIES UNITS TO CHOCOLATE MANUFACTURER FOR THEIR PROCESS LINE.

APPLICATION:..... Chocolate Manufacturer

LOCATION:..... New Jersey

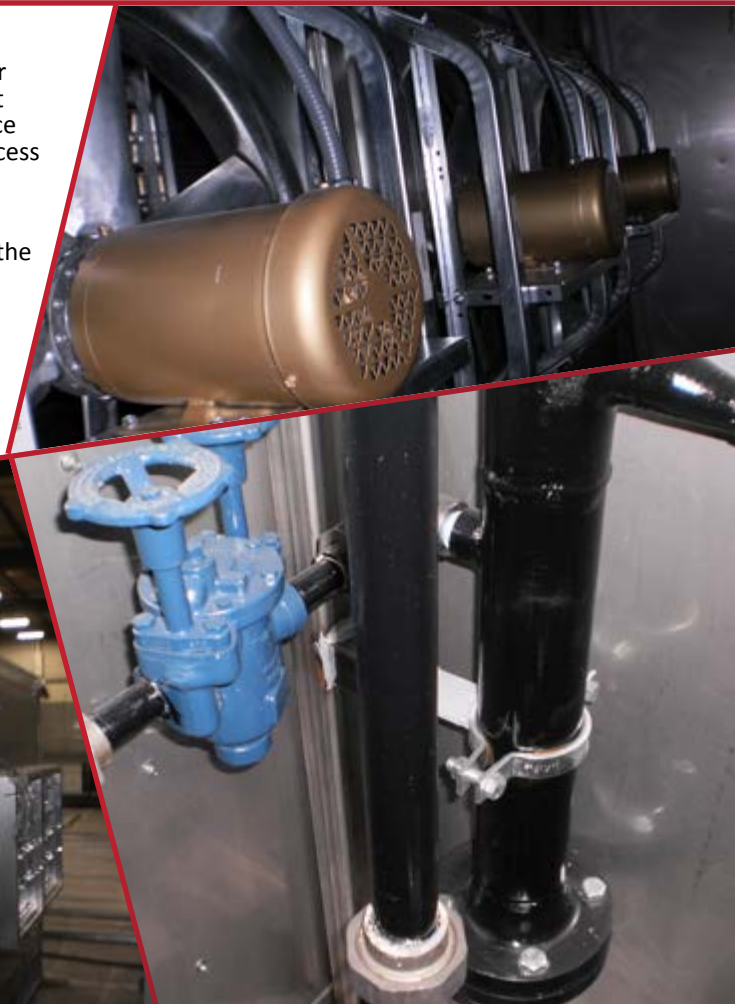
CUSTOM HVAC SYSTEM:..... 2 OUTDOOR AIR HANDLING UNITS WITH ELECTRICAL/PIPING VESTIBULE

MAR CRAFT TOTAL SOLUTION

We worked directly with the specifying Engineer on this project to provide units that would meet a specific foot print and provide the performance required. The units are supplying air to the process line at Chocolate Manufacturer.

NOTEWORTHY

- Vestibule does not span the entire length of the units so each unit is L shaped.
- 304 Stainless Steel Interior, Washdown Construction
- MarCraft was basis of design for this project working closely with the specifying engineer to select a unit to fit in the space allotted and provide the performance required.



MAR CRAFT
CUSTOM HVAC SYSTEMS

(800) 325-1303

11880 Dorsett Road,
St. Louis, MO 63043

MarCraftHVAC.com

CASE STUDY

CHOCOLATE MANUFACTURER

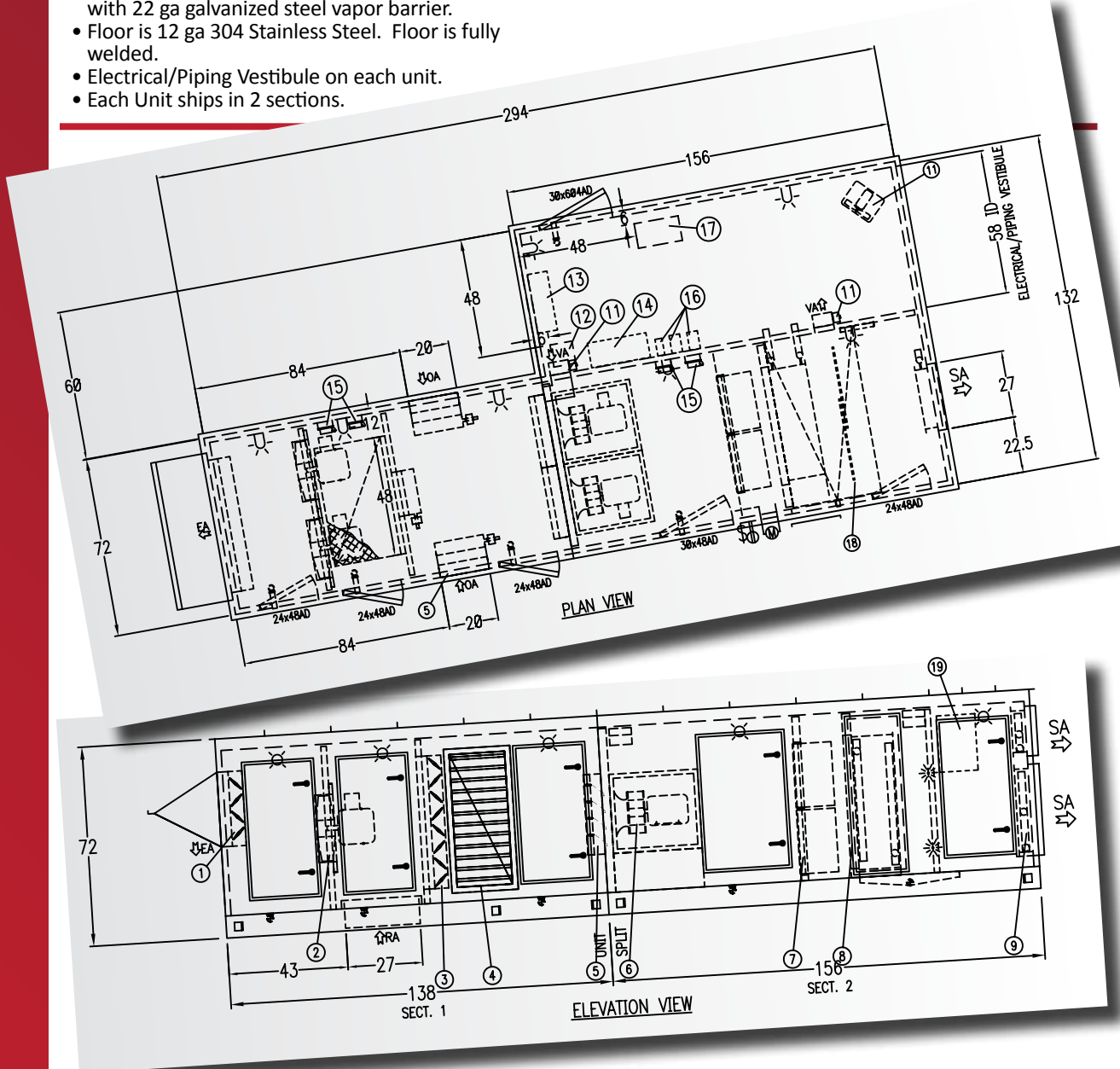
OUTDOOR HVAC SYSTEMS SPECIFICS:

CONSTRUCTION

- 2" double wall casing with Foam insulation and Thermal Break. Unit is Painted Galv steel exterior with 304 Stainless interior.
- Unit Base is 8" Structural C-Channel w/ C-Channel Cross bracing fully welded. 4" of Foam insulation with 22 ga galvanized steel vapor barrier.
- Floor is 12 ga 304 Stainless Steel. Floor is fully welded.
- Electrical/Piping Vestibule on each unit.
- Each Unit ships in 2 sections.

SPECIFICATIONS

- RTU-1 26,400 CFM Supply Air, 7,934 CFM Exhaust air
- RTU-2 7,200 CFM Supply Air, 3,600 CFM Exhaust Air



1. EA Damper with Hood
2. Exhaust Fan Assembly
3. RA Damper
4. OA Damper with Louver
5. Fan Isolation Damper
6. Supply Fan Assembly
7. Combination Filter Bank
8. Cooling Coil Bank
9. Zoned SA Openings with Steam Coil
10. Electric Heater

11. Vestibule Ventilation Dampers
12. 9" x 9" Electrical Chase
13. Control Panel
14. Electrical Panel
15. Local Fan Disconnects
16. VFD's (provided by others)
17. 10" x 18" Pipe Chase
18. UVC Light Bank
19. UVC Ballast Panel

COMPONENTS

- Multiple Prop Exhaust Fans with EA Damper and Hood on end of unit
- Economizer section for 100% OA Economizer or RA/OA mixing
- Multiple Supply Air modular plenum fans with isolation dampers
- Filter Section
- Bottom RA Inlet
- Cooling Coil Section
- Zone SA Openings with a separate Steam Coil for each Zone



MAR CRAFT
CUSTOM HVAC SYSTEMS

(800) 325-1303

11880 Dorsett Road,
St. Louis, MO 63043
MarCraftHVAC.com